

How to use data card (device id 9603) on windows CE(5.0&6.0)

Model:200HU, 220HU, 500HU, 600HU

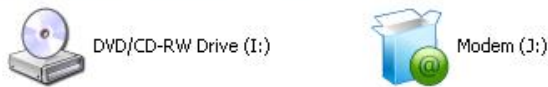
There are two working mode "DISK" and "MODEM". If in DISK mode, the data card will be recognized as CD-ROM when plugged into PC, working in plug and play, auto-installing software and drivers. If in MODEM mode, the data card will be recognized as COM ports, asking for drivers installation. Generally without pre-configuring, the default will be in DISK mode. If you need to use the data card in MODEM, please do as follows. (For example, when used on Linux or WinCE, the CD-ROM may not be recognized, the data card should work as COM ports. According to the following manual, the data card can be configured to MODEM mode, as well as configured back to DISK mode.)

Configure data card to MODEM mode

1, Drivers installation on windows XP sp2.

When you plug into the modem, the Pc-suit will run automatically. Otherwise, please run the Modem/Modem_installation.exe manually.

Devices with Removable Storage

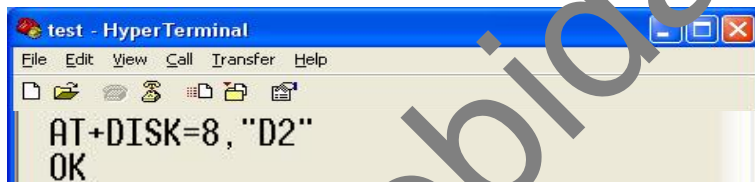


2, Device configuration on XP

Please create a HyperTerminal and connect to modem port (Generally it is the last com port). And set the device as follows.

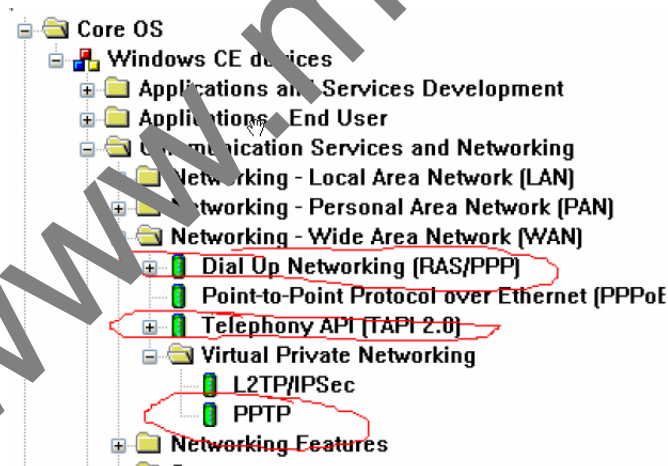
```
AT+DISK=8,"D2"[ENTER]
```

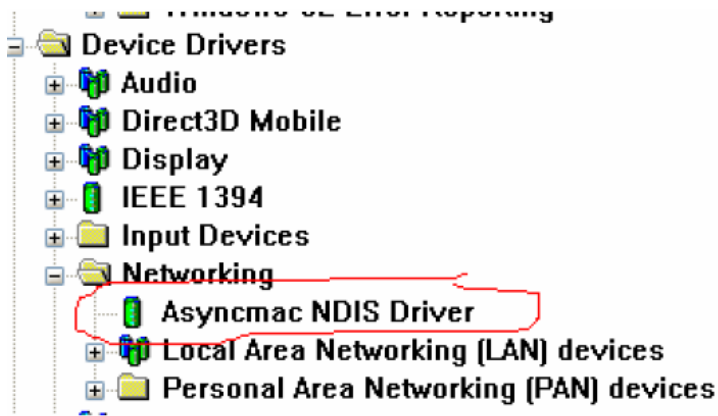
Return:OK



3, Check the WinCE component

Before create Wince Image, please confirm the followed required component in the system.





4, Add or built the modem driver into windows CE system. You can add the driver manually to the system, while it is suggested that you should build the driver into wince system.

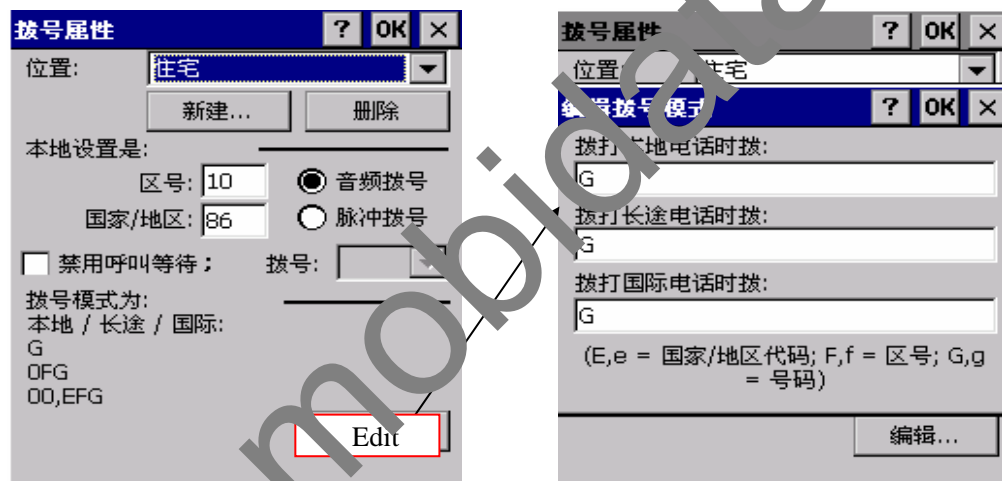
Notice: The drivers can only support wince based on ARM.

5. When create image please build the released drivers (In file of release) into root of windows.

6, please build the register file into your system. (File: U6100reg_9603.reg)

7. RAS connection setting on wince

1)、 Please open the property panel of dialing.

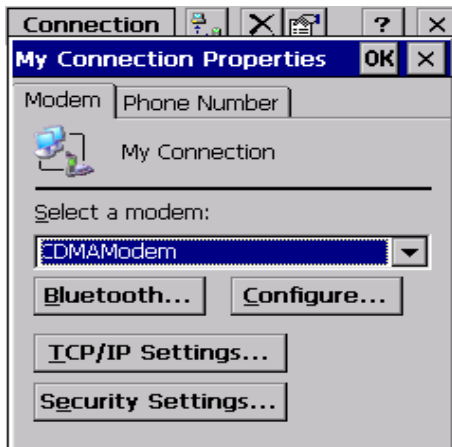


Please set dialing mode as "G".

2), please create a new connection

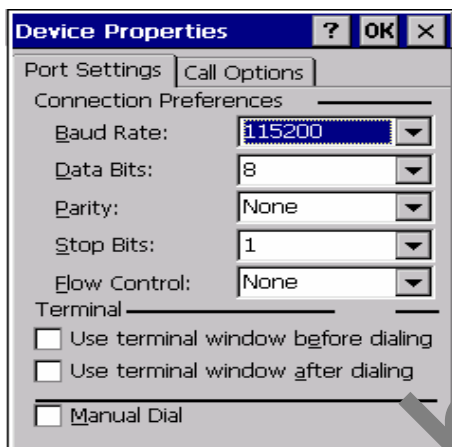


Here you need to select the first item “Dialing connection”



After installed the driver into system, there will be a new modem ” CDMA Modem”, please select the new modem.

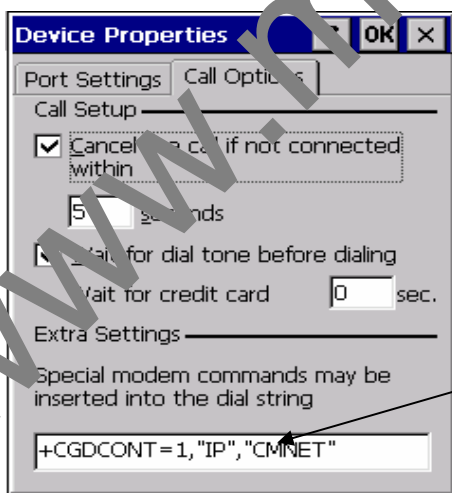
3), Please set the device properties like the followed



Setting port:

Baud: 115200

Flow Control: None



Additional Initialization Command

4), Please set up the initializing command

+CGDCONT=1, "IP", "CMNET"

Notice: “CMNET” is the APN, please use your operator’s APN.

5), TCP/IP and security settings

TCP/IP:

Regular——> Let server setup the IP address

Use soft compression

Use IP data compression

Sever——> let server setup DNS address automatically, please don't set the DNS

Security:

Advanced——>Do not use data encryption

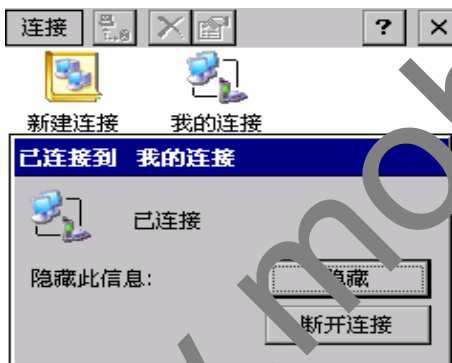
Use EAP protocol

Dial number: : *99***1# or *99#



*99***1# OR *99#

If the username and password required, please confirm with your operator



Hide

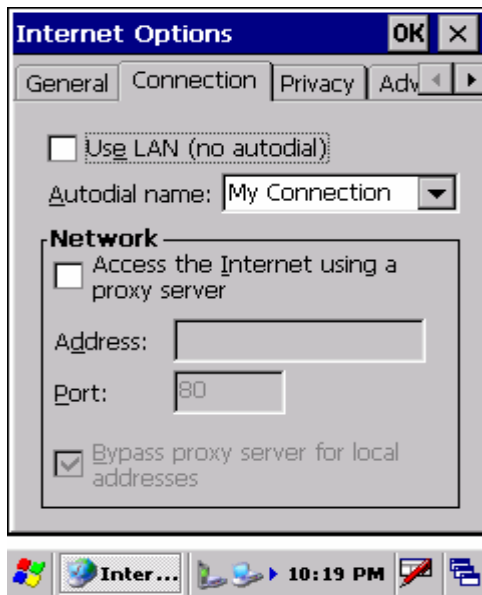
Disconnect



6) Please connect.

Notice:

1. If there's WIFI modem in the equipment, please do not use "LAN"
INTERNET->Tools->Options->Connection>Autodial name



Notice:

The driver can support plug-in and plug-out

1. Before plug out please close the connection.
2. If you plug out the modem without close the connection, when next time use, the system may indicate "Port unavailable".
3. If "port unavailable", please replug into the modem.
4. If "No Carrier", it may be caused by the poor signal or the incorrect dial properties. Please change another area or check the dial properties. THE FIRST ITEM IS G"

Configure data card back to DISK mode

1. Please plug data card into PC data card drivers installed. (Or Install drivers from CD)
2. Device configuration on XP

Please create a HyperTerminal and connect to modem port (Generally it is the last com port). And set the device as follows.

AT+DISK=8,"D3" [ENTER]

Return:OK

